



SEATTLE LEAGUE OF ARTS BRUSHSTROKES

Masthead Art: Beth Betker

Editor: Joan O'Byrne

OCTOBER 2016

MEETING
OCT 24TH
at
Wedgwood Presbyterian
Church.
8005 35th Ave NE
Seattle WA 98115

TIME
6:30pm Board Meeting
7:00pm Socialize
7:15pm Painting of the Month
7:30pm General Meeting
followed by
" The Program of the Evening "

OFFICERS

PRESIDENT Christina Scott
VICE PRESIDENT Eunice Smith
TREASURER Elaine Cohn
SECRETARY Buzz McCollough

BOARD

1 YEAR Lee Henrickson
2 YEARS Jen Sonneborn
3 YEARS Pat Foss

COMMITTEE HEADS

MEMBERSHIP Jen Sonneborn
POM Marcia Cecil
SHOWS Lee Henrickson &
Lynn Kerr
PROGRAMS Eunice Smith
NEWSLETTER Joan O'Byrne

INTERNET

www.seattle-league-of-arts.homestead.com

Guests are always welcome.

A MESSAGE FROM THE PRESIDENT

Reminder: Our 3 person nominating committee, Carol Castaneda, Jan Trowbridge and Mary Herdell will draft a slate of officers for the upcoming year and present to the meeting for membership consideration.



HOLIDAY DINNER

Our Annual Party will be held on NOV 28th in the Church Basement. Please create a hand painted card or piece of art to exchange as a gift. There will be a receptacle for canned goods to be donated to charity. Carol Castaneda agreed to be chair of the Party Committee. More details will be coming from Carol

PAINTING OF THE MONTH
SEPTEMBER 2016

1st Place. Beth Betker

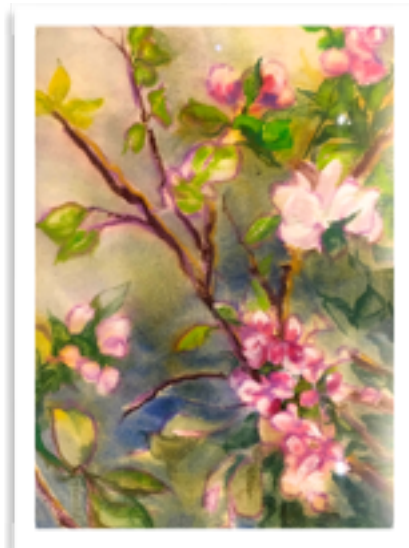


2nd Place. Jen Sonneborn



2nd Place Jan Trowbridge

2nd Place. 3 way tie... Elaine Cohn



Bring your paintings to the meeting for Painting of the Month. There needs to be at least 5 to make it possible!!

PROGRAM FOR THE EVENING: "Getting to know one another up close and personal". Each member should bring drawing paper...newsprint is fine, something to draw with, a felt pen, crayon, charcoal whatever! Just one will be enough.

Beth Betker will have a one person show at The University Friends Center in the U District.
Sharon Hitt has paintings hanging at Pedro Rosado's salon in Belltown.

"I find that I can say in colors what I cannot say in words" Georgia O'Keefe

